



BON SECOURS HOSPITAL CORK

PAEDIATRIC SERVICE INFORMATION

For Parents & Guardians



BON SECOURS HOSPITAL CORK: OUR MISSION



To care for the sick, the dying and their families within a Catholic Ethos. Inspired by the Gospel and sharing in the healing mission of Jesus, we recognise the dignity and uniqueness of each person, seeking to provide high quality holistic care characterised by compassion, respect, justice and hope.

BON SECOURS HOSPITAL CORK: OUR VALUES



BON SECOURS HOSPITAL CORK: OUR VISION



A Leader in Healthcare



Empower Staff



Reach out to the community



Be Innovative & Responsive to New Developments in Healthcare



Maintaining our Patient Friendly Environment

BON SECOURS HOSPITAL CORK: OUR ACCREDITATIONS



Joint Commission International

Bon Secours Cork has received up to date accreditation from the Joint Commission International (JCI) with the most recent survey and award completed in 2023.



JAG Accredited

In August 2024 the Endoscopy Unit achieved its first JAG Accreditation from the UK Royal College of Physicians. The Endoscopy Unit demonstrated full compliance with the JAG Standards.



IFSO Bariatric and Metabolic Surgery

Mr Colm O'Boyle Consultant Surgeon and his service have been designated a centre of excellence for bariatric and metabolic surgery with the most recent survey and award completed in 2021.



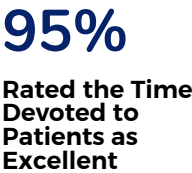
ASCO Certification

The Oncology Service has been chosen as an international pilot site for ASCO certification that will provide formal recognition that oncology practices in Bon Secours Cork delivers high-quality, evidence-based, patient-centred cancer care.

BON SECOURS HOSPITAL CORK: OUR PATIENT EXPERIENCE



How Did Patients Rate Their Care?



ACCESSING PAEDIATRIC MEDICAL SERVICES



Available 24/7, 365 Days

Should you wish to be seen by a paediatrician please contact their private rooms or your GP will need to make a referral to the specific paediatrician.

For your child to be seen in the Paediatric Assessment Unit your G.P needs to review your child and contact the booking office from Monday to Friday on 021 4801604.

Depending on admission criteria and availability your child will be given an appointment time that day or at a later date to be reviewed. We do not accept walk-in patients.

All allergy services are run directly through Dr. Ioana Maris. Please make contact with her private rooms to arrange investigations.

PAEDIATRIC ASSESSMENT UNIT

To arrange a referral to the PAU,
ask your GP to please call
021 4801604/05



Prof. Ronan
O'Sullivan



Dr Micheál
Sheehan

Open 8am - 6pm Monday to Friday (Except Public Holidays)

The PAU provides patients with:

- Rapid consultant assessment and prompt access to a range of diagnostic tests such as x-rays, scans, blood tests, viral swabs, etc.
- Admission to the hospital where necessary under the care of our Paediatricians.
- If required, patients will have referrals to other Bon Secours Hospital Cork services arranged.
- Children can be accepted to the Paediatric Assessment Unit 24/7; however, outside of 8am-6pm, please contact the ADON prior to admission

The PAU is a purpose-built facility, contiguous with our existing MAU, and is staffed by senior medical and nursing staff with specialty expertise in the care of children.



OVERVIEW OF PAU

The PAU is a GP referral only service. We will accept children (aged between 28 days and 15 years) with a range of acute presentations, such as (list not exhaustive):

- ✔ Infections
 - Chest (and other respiratory, including suspected COVID)
 - Urinary tract infection (UTI)
 - Gastroenteritis
 - Skin infection
 - Tonsillitis
- ✔ Babies with persistent crying/irritability, feeding problems, growth concerns
- ✔ Acute asthma
- ✔ Neurological conditions, such as suspected seizures, concussion, headaches
- ✔ Collapse and dizziness, palpitations, chest pain
- ✔ Abdominal pain
- ✔ Unexplained rashes

SPECIFIC EXCLUSION CRITERIA

- ✘ Trauma (fractures, lacerations/wounds)
- ✘ Ambulance referrals
- ✘ Eye emergencies
- ✘ Certain ENT emergencies, e.g. nosebleeds, airway foreign bodies
- ✘ Child protection/mental health presentations

CONSULTATION FEE/COSTS

- The initial consultation fee applies whether you child is admitted or not, but may be claimed back on your health insurance policy.
- Any fees covered by insurers will be invoiced directly to them and are in addition to fees paid by patients.

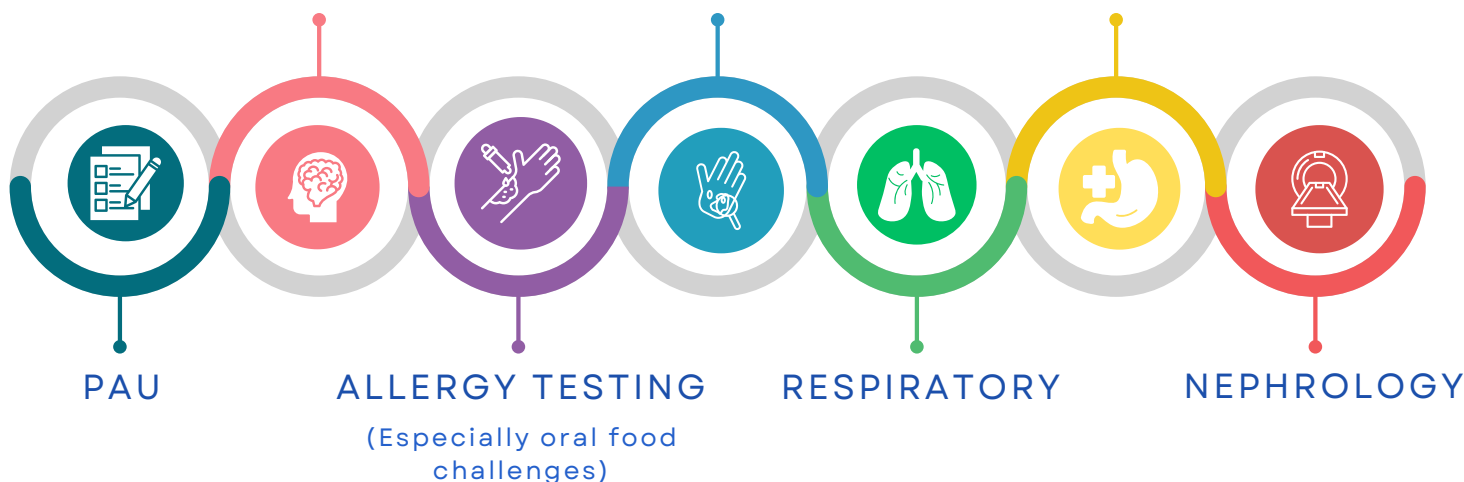
PAEDIATRIC SERVICES

MEDICAL PATHWAYS

NEUROLOGY

DERMATOLOGY

GASTROENTEROLOGY



Meet our Paediatric Consultants



Dr. Niamh Lynch
*Specialising in
Paediatric Neurology*



Dr. Aoife Waters
*Specialising in
Childhood Nephrology*



Dr. Ioana Maris
*Specialising in Childhood
Allergies*



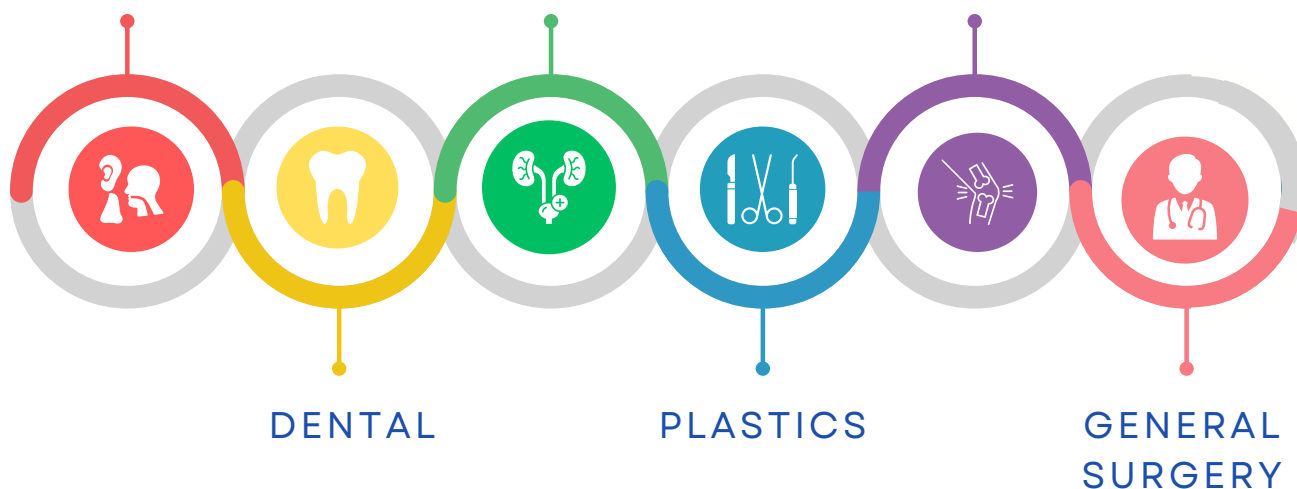
Dr. Gavin Stone
*Specialising in
Paediatric Respiratory
Medicine*

SURGICAL PATHWAYS

E.N.T

UROLOGY

ORTHOPAEDICS



SURGICAL ADMISSION



Minors under 16 must be accompanied



Consent form must be signed



Siblings are not allowed in the ward for day case surgeries



Should your child require extra support, please contact the ward to discuss this with the Clinical Nurse Manager on duty



Day case patients are placed in shared rooms



Expect a pre-assessment phone call 48-72 hours before surgery to discuss your child's medical history



Please ensure you take this phone call as if you do not, this may result in cancellation of the surgery



While your child is in surgery, you may use the canteen, coffee shop, or parents' room

FASTING FOR SURGERY/MRI UNDER SEDATION

If your child is getting anaesthetic for surgery or sedation for MRI it is very important that they are fasting. Guidelines for fasting are 6 hours from food and 2 hours from clear fluids. This means that your child should not eat 6 hours before admission time. They can consume clear fluids such as flat 7 up or water up to 2 hours before their admission time.

SICKNESS PRIOR TO SURGERY

Should your child have a **temperature, cough, cold, skin rash 24-48 hours prior to surgery** or **MRI under sedation** please **make contact with the ward and your consultant** to determine if your child is suitable for their procedure to go ahead.

ALLERGY SERVICE

- Intervention and Diagnosis: Skin Prick Test, specific IgE, Oral Food Challenge, Drug Provocation Test
- Management of Food Allergy, Environmental Allergies, Drug Allergies
- Dietetic Allergy Care
- Eczema Management
- Sublingual Immunotherapy for House Dust Mite and Grass Pollen Allergy

Referrals are made via GP letter to Dr Ioana Maris, Suite 2.2, Consultants Private Clinic, Wilton, Cork; inquiries via email to asmith@bonsecours.ie

CHARLIE GOES FOR DAY SURGERY



1



Charlie arrives at the hospital for his operation.

2



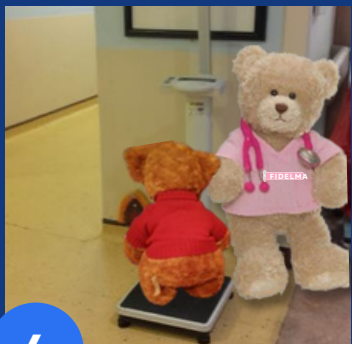
His details are checked and he is given a wristband to wear.

3



Charlie will be brought to the children's ward where he will meet his nurse and doctor.

4



He will be weighed.

5



Charlie's doctor will make sure he is okay for his operation. They will look in his ears and listen to his chest with their stethoscope.

6



He will be given a gown to wear. The nurse will check his heart rate and record his blood pressure by using a special machine.

7



Charlie will be brought to theatre where the anaesthetist will put him to sleep for a little while for his operation.

8



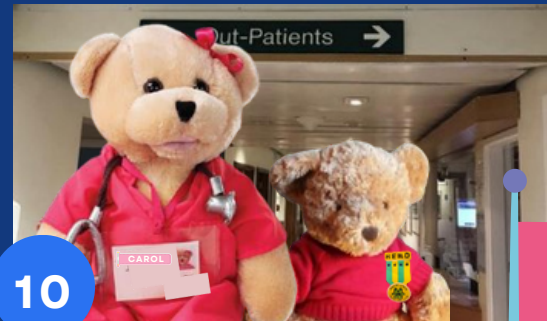
After Charlie's Operation, a nurse will bring him a drink and something to eat.

9



Before he leaves, the nurse will remove the special tube from his hand. His parents will be given instructions on how to care for Charlie at home.

10

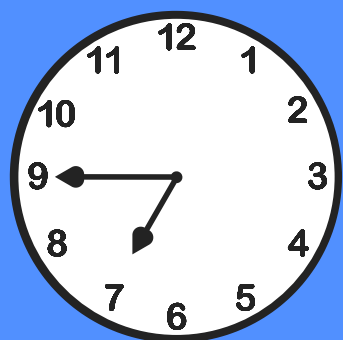


Charlie will return in a few weeks for a final check up with his doctor.

Fidelma Hurley
CNM1
Children's Ward
Carol Cronin
Staff Nurse OPD
April 2021

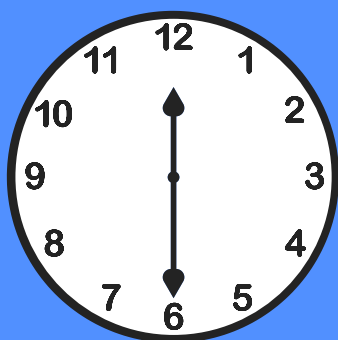
MEAL TIMES AND CHILD FRIENDLY FOOD

MEAL TIMES



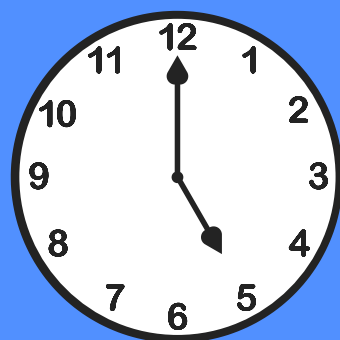
BREAKFAST

7:45am to 8:45am



LUNCH

12:30pm to 1:30pm



DINNER

5:00pm to 6:00pm



Our Catering and Dietetic teams have created varied menus to cater for your nutritional needs.



Visitors can avail of the services of the restaurant and café located on the ground floor.

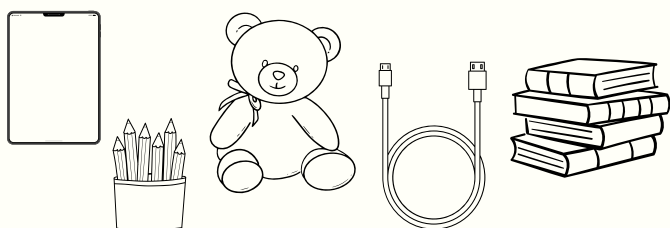


Takeaway beverages and sandwiches are also available from the hospital shop on the ground floor.

COMING TO HOSPITAL

WHAT TO BRING

Extras: Toys, chargers, books



DO NOT BRING:

- Large bags
- Valuables

You are responsible for all personal belongings you bring to the hospital

Essential clothing and personal care

- Convenient shoes such as closed-back slippers or trainers –
- Loose-fitting nightwear and a dressing gown
- Loose-fitting clothes for travel to and from the hospital
- Toiletries including toothpaste, toothbrush

Medicines and medical aids

- All medicines you currently take including prescription
- Any glasses or contact lenses your child uses
- Completed Medications History List

PLAYROOM

We have a **playroom** on the Children's Ward that your child is welcome to use.

PARENTS ROOM

There is a **parent's room available for (INPATIENTS ONLY)** on the ward that has a microwave, tea and coffee making facilities and a fridge. There are also shower facilities. There are chairs and TV for you to utilise at your leisure. Please note that no children are permitted to use the parent's rooms.

ENTRANCE

You can enter the hospital via the **main College Road entrance** or at the **entrance to the Bon Secours Cork Cancer Centre** located at the rear of the hospital campus on Western Road.

SAFETY

Once admitted to the ward children are **not permitted to leave until discharge**

1 parent/legal guardian/ responsible adult only are permitted to remain with the child overnight and are provided with a reclining chair to sleep on.

Visiting Policy: For surgical day cases it is strictly **1 parent per child. No siblings are permitted.**

If your child is admitted as a **medical patient, both parents are permitted to visit. Visiting times are 2.30–3.30 and 7–9.**



DISCHARGE HOME AFTER SURGERY

Your child will be ready for discharge when they are **awake and alert, no signs of bleeding, pain under control, tolerating food and drink and all their vital signs are within normal limits for their age group and when your consultant approves your discharge.**

- If your child had urology surgery they will need to pass urine before discharge
- If your child receives sedation for MRI they are required to stay for 4 hours after sedation, even if the MRI was unsuccessful
- Follow up instructions will be given to you on discharge and your cannula will be removed.
- Once discharged home and you have further queries please feel free to contact the Children's Ward for any queries.



HEALTHCARE INSURANCE AND FINANCIAL INFORMATION

- Bon Secours Hospital Cork is covered by all major private health insurers.
- Please bring your Health Insurance Provider Plan and membership number with you on the day of your admission.
- An excess amount and/or a shortfall amount may be payable by you, depending on the health insurance plan that you have purchased.
- You may be accommodated in a private room during your stay even if you have not requested one. In such circumstances, you may be liable for a shortfall payment.
- Private room shortfalls vary depending on the insurance plan and can be very significant. Bon Secours Hospital Cork limits the private room shortfall at €80 per night for a maximum of 4 nights during any single admission.
- Patients who have multiple admissions to the hospital will have the private room shortfall capped at €720 in any calendar year.
- You can check your cover at bonsecours.ie/check-cover

**CHECK YOUR
INSURANCE COVER**

www.bonsecours.ie/check-cover



ACCESSING YOUR MEDICAL RECORDS

- You can apply for a copy of your medical records by emailing gdprcork@bonsecours.ie or writing to the Quality & Safety Department, Bon Secours Hospital, College Road, Cork, T12 DV56.
- Proof of ID in the form of a legible copy of your current driver's licence or passport must be included with your application.