

# Endoscopy Service: Our Service

The Bon Secours Hospital Tralee Endoscopy Unit cares for adults, both inpatients and outpatients who are undergoing investigative and therapeutic procedures via an endoscope which looks inside the body. The Endoscopy department provides a compassionate and understanding approach to the patient who is at a vulnerable and uncertain stage in their diagnosis and treatment.



(066) 71 64519



08:00 - 20:30



The Bon Secours Hospital Tralee has a newly refurbished Endoscopy Unit with patient safety and comfort in mind. There are three endoscopy rooms equipped to the highest standards and we pride ourselves on providing an informative and friendly service.

**The Endoscopy Department at the Bon Secours Hospital Tralee Offers a range of procedures and services which are:**



**Bronchoscopy:** Examination of the trachea (windpipe), the bronchi (airway branches and some of the lungs)

**Colonoscopy:** Examination of the lining of the large bowel.

**ERCP:** Detailed x-ray examination of the bile duct and / or pancreas to remove stones or to place a tube if there are narrowed areas.

**Gastroscopy:** Examination of the lining of the oesophagus (gullet), the stomach and duodenum which is the first part of the small intestine.

**Flexible Sigmoidoscopy:** An examination of the lower bowel.



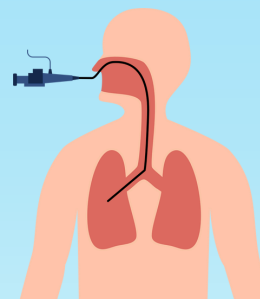
The Endoscopy Department is open from Monday - Friday for general procedures and services. In addition to this, an on-call service via theatre on staff is provided which provides extended / emergency service offering where applicable. This service is in operation outside the standard working hours described above and is available every day that the hospital is open. Saturday service can be provided if required.

# Endoscopy Service: Our Service

## Bronchoscopy



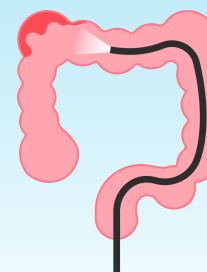
Bronchoscopy is a procedure to look directly at the airways in the lungs using a thin, lighted tube (bronchoscope). The bronchoscope is put in the nose or mouth. It is moved down the throat and windpipe (trachea) and into the airways.



## Colonoscopy



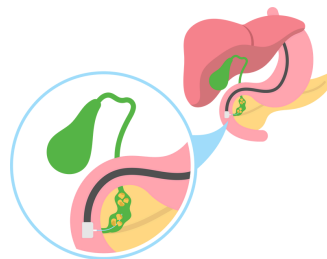
During a colonoscopy, a long flexible tube (colonoscope) is inserted into the rectum. A tiny video camera at the tip of the tube allows the doctor to view the inside of the entire colon.



## ERCP



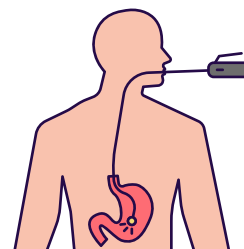
Endoscopic Retrograde Cholangiopancreatography or ERCP is a procedure to diagnose and treat problems in the liver, gallbladder, bile ducts and pancreas. It combines X-Ray & the use of an endoscope - a long, flexible, lighted tube.



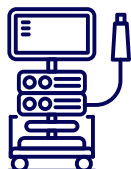
## Gastrosocopy



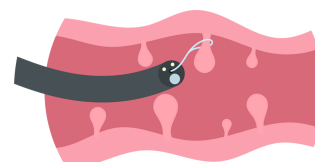
A gastroscopy is performed using a thin, flexible tube (gastroscope) which has a camera and a light on tip used to look at the area being examined.



## Sigmoidoscopy

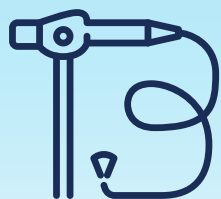


A sigmoidoscopy is a diagnostic test used to check the sigmoid colon, which is lower part of your colon is close to your rectum and anus.



## Endoscopy Service: Our Facilities

The Bon Secours Hospital Tralee Endoscopy Unit care for adults, both inpatients and outpatients who are undergoing investigative and therapeutic procedures via an endoscope which looks inside the body. The Endoscopy department provides a compassionate and understanding approach to the patient who is at a vulnerable and uncertain stage in their diagnosis and treatment.



The Bon Secours Hospital Tralee has a refurbished Admissions area built with comfort in mind. There are three endoscopy rooms equipped to the highest standards and we pride ourselves on providing an informative and friendly service.

Our priority is to ensure that patient care and best practice is at the centre of everything we do in the unit. The unit provides a wide range of high-quality diagnostic and therapeutic gastrointestinal (GI) endoscopic, respiratory procedures which cater for both inpatient and outpatients over the age of 16 years.

The Endoscopy Department is open from **08:00 to 20:30**, Monday to Friday. The unit can be contacted on **(066) 71 64519**. Patients requiring an emergency service out of hours will be processed in theatre.

### Location

The Endoscopy Unit is located on the ground floor of the Bon Secours Tralee, towards the back of the hospital next to the Medical Assessment Unit and is clearly signposted from the main reception area.

Patients are discharged via the recovery area to the discharge lounge, where they then wait for collection.



## The Endoscopy Unit Consists of:

- An Admission Area
- Three Procedure Rooms
- Decontamination Unit
- Communication Room
- Discharge Lounge
- Recovery Room
- Two Toilets

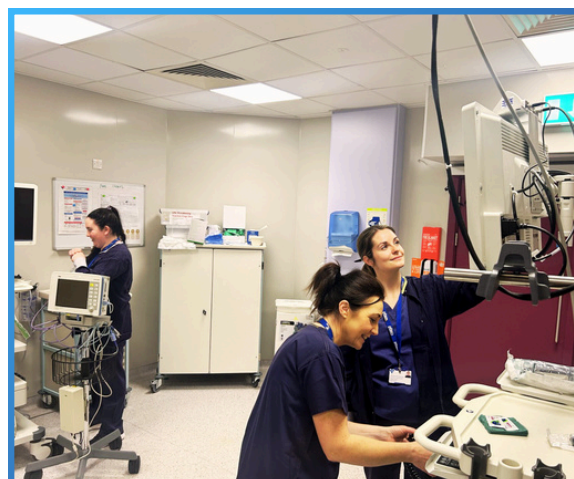


### Admission Area

- A Hospital Waiting Area for patients on arrival to the unit
- Seven Individual Admission Pods, two individual patient toilet facilities, one of which is wheelchair accessible.
- Seven single patient pods.

### Procedural Area

- Comprising of three state of the art Procedure Rooms.





## Recovery Bay

- Twelve Individual Trolleys
- Discharge Lounge
- Toilet Facilities



In the event that the patient requires bowel preparation pre procedure, the patient is facilitated in one of the seven patient pods.

### Other accommodation consists of:

- Decontamination Facilities (separated into clean and dirty areas), with swipe access.
- Sluice room with chemical cupboard
- Storeroom

All areas within the unit are equipped with oxygen, suction, emergency bell, patient call bells and a resuscitation trolley.

