



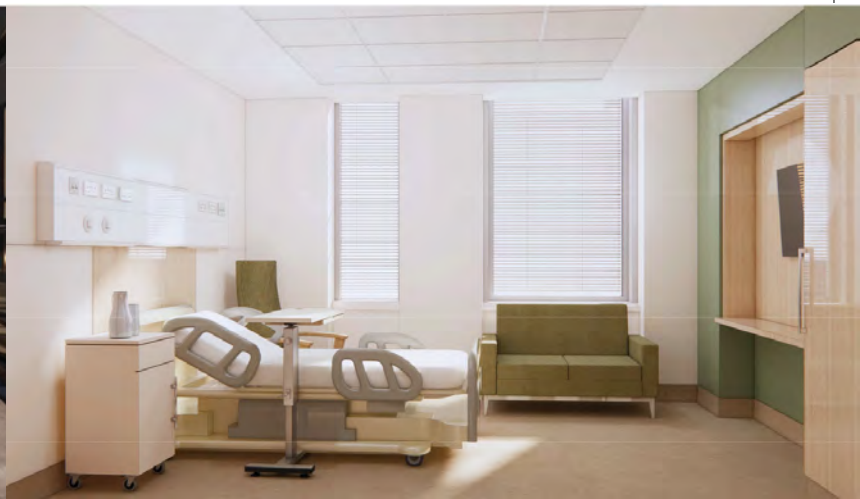
The Future of Healthcare in the Midwest

Transforming healthcare in the Mid-West, this state-of-the-art hospital with 170 beds opening in September 2025 will provide Advanced Medicine and Exceptional Care to meet the healthcare needs of the Mid-West region.

This hospital has been designed with patient experience to the fore and will be a truly sustainable hospital. Located at the edge of Limerick City with access to public transport and M7 Motorway.



BON SECOURS[®]
HOSPITAL LIMERICK



Key features will include:

- 95 Private Inpatient Bedrooms with en-suite
- 4 Specialist Observation beds
- 26 Endoscopy Recovery Bays & 3 Procedure Rooms
- 4 Operating Theatres
- 27 Bay Day Surgery Suite
- 20 Bay (non-GA) Day Surgery Unit & 3 Procedure Rooms
- Ophthalmology Theatre & 6 Bay Recovery Suite
- Cath Lab & 8 Bay Recovery Suite
- 10 Bay Hospital Access Unit
- Inpatient & Outpatient Radiology Department including PET CT
- Outpatient Clinical Measurement Diagnostics including Cardiology, Vascular & Neurology

We are here to help you our GP colleagues

The new hospital will significantly increase the capacity of Bon Secours in Limerick, offering a broad range of surgical procedures, including a catheterisation lab, and a 10-bay hospital access unit. It will be complemented by a 10,000 sq ft clinical services hub, housing consultant suites, outpatient radiology and diagnostic.

Stay up to date with Bon Secours Hospital Limerick. Click on the QR code to sign up to receive communications including news, events, services, and consultants.

Scan for more information →

Advanced Medicine
Exceptional Care

T: 061 490 500 | www.bonsecours.ie/limerick

