



BON SECOURS HOSPITAL
College Road, Cork



Information Booklet for Medical Services available at Bon Secours Hospital Cork

APRIL 2017



Bon Secours Hospital,
College Road, Cork.

Tel: 021 4542807
www.bonsecours.ie

Advanced Medicine Exceptional Care

Welcome to Bon Secours Hospital, Cork

Bon Secours Hospital Cork is Ireland's largest private hospital, and it is also one of the largest private hospitals in Europe. Our hospital was established in 1915 and has more than 300 beds. We employ more than 1,000 staff and admit about 35,000 patients every year. It is a general hospital providing an extensive range of medical and surgical specialties for adults and children. These include:

- ✦ oncology,
- ✦ cardiology,
- ✦ orthopaedics,
- ✦ gastroenterology, and
- ✦ general surgery.

We cater for urgent admissions from GPs (family doctors) in both medicine and surgery for adults and children. We recently opened a new Acute Medical Assessment Unit. We have a fully equipped:

- ✦ Intensive Care Unit (ICU),
- ✦ Coronary Care Unit, and
- ✦ High Dependency Unit.

We will soon develop radiotherapy services to complete our full range of cancer services. Consultants deliver all our services. They are supported by:

- ✦ NCHDs (non-consultant hospital doctors),
- ✦ specialist nursing staff, and
- ✦ a broad range of health and social care professionals.

Bon Secours Hospital Cork is a teaching hospital of UCC (University College Cork). This means we make a significant contribution to undergraduate teaching in medicine and nursing. Our hospital is proud to hold many quality accreditations including:

- ✦ JCI (Joint Commission International),
- ✦ INAB (Irish National Accreditation Board), and
- ✦ ESMO (the European Society for Medical Oncology accreditation).

DEPARTMENTS



ANAESTHETICS	●
BARIATRIC SURGERY – WEIGHT-LOSS SURGERY	●
BREAST CARE CENTRE	●
CARDIOLOGY	●
COLORECTAL	●
DAFFODIL CENTRE	●
DENTISTRY INCLUDING ORAL AND MAXILLO-FACIAL SURGERY	●
DERMATOLOGY	●
DIABETES AND ENDOCRINOLOGY	●
DIAGNOSTIC IMAGING AND X-RAY	●
EAR, NOSE AND THROAT (ENT)	●
ENDOSCOPY	●
GASTROENTEROLOGY	●
GENERAL SURGERY	●
GYNAECOLOGY	●
HAEMATOLOGY – STUDY OF THE BLOOD	●
HEALTH SCREENING	●
MEDICAL ASSESSMENT UNIT (MAU)	●
NEUROLOGY AND NEUROPHYSIOLOGY	●
NUTRITION AND DIETETICS	●
OCCUPATIONAL THERAPY	●
ONCOLOGY	●
OPHTHALMOLOGY	●
ORTHOPAEDICS	●
PAEDIATRIC DENTISTRY	●
PAEDIATRIC MEDICINE	●
PAIN MEDICINE	●
PATHOLOGY	●
PHYSIOTHERAPY	●
PLASTIC SURGERY	●
RESPIRATORY AND SLEEP MEDICINE	●
RHEUMATOLOGY	●
UROLOGY	●
VASCULAR SERVICE	●
CONSULTANT PHONE LIST	●

A GUIDE TO GOING PRIVATE

People often think that going private is difficult to do – it's not. In fact, it's quite simple to access private hospital care, just follow these steps.

Go and see your GP who will be able to advise you and help you make an informed choice about what is best for you and your specific needs.

Then, if you need tests or maybe X-rays and you choose to go to our hospital, you will find that we can carry out such tests promptly and at a time that suits you. If you need any information on costs, or otherwise, we are here to help you. We will get the results of any tests to your GP in a very short time.

If you need to see a Bon Secours hospital consultant or specialist, your GP will be able to refer you. If you have a particular consultant in mind – perhaps one who has treated you before, or has been recommended to you, then tell your GP. Many people choose private treatment in our hospital to

guarantee prompt access to a consultant and if required, a hospital bed.

When you make an appointment to see a consultant privately in our hospital, you shouldn't have to wait too long for your appointment. Very often the consultant will see you within a few weeks. Private consultations cost €120-€250, depending on the specialist.

If you need treatment or admission to the Bon Secours Hospital, Cork, you can remain in the care of the hospital consultant you have chosen.

We have dedicated staff to answer any questions you may have about payment or your health insurance cover. If your health insurance does not fully cover your medical costs, we have payment plans that can be tailored to suit your needs. Our specialised staff can answer your questions about how you can pay the balance.

BON SECOURS HOSPITAL HEALTH INSURANCE HELPLINE: 1890 130027

Points to note

You can access some of our services directly without a GP referral. These include areas like physiotherapy and dietetics. If you wish to know more about these services, please call us. If you wish to find out what consultants work in the Bon Secours Hospital and what their specialties are, we are very happy to provide you with this information and help you in any way that we can.

Contact us directly

To ask about our services please phone us on the this number: 0214542807 or www.bonsecours.ie

Did you know you can claim tax relief on medical expenses?

Many people overlook claiming back the tax they are entitled to for medical expenses. You must keep receipts for all medical expenses incurred during the year. You cannot claim back tax for any expenses that you get a refund for from insurance companies or the HSE.

For further information about tax relief:

Website: www.revenue.ie

Phone: Lo-call 1890 222 425 (South West Region)

ANAESTHETICS

Anaesthesia is when you are given drugs by injection or by inhalation (breathing in). These drugs block the feeling of pain and other sensations. They may also produce a deep state of unconsciousness that eliminates all sensations. This allows medical and surgical operations to be done without causing undue distress or discomfort.



OUR ANAESTHETISTS

Dr Gordian M Barry

Dr Richard D Flynn

Dr Kamran Ghori

Dr Denise McCarthy

Dr Nollag O'Rourke

Dr John Owens

BARIATRIC SURGERY – WEIGHT-LOSS SURGERY

Bariatric surgery is weight-loss surgery. You would have to be admitted to hospital for a few days to have this surgery. Most of these types of surgeries result in patients losing weight. Most weight-loss surgeries are performed using minimally invasive techniques. This means that you would have very few scars.

Patients are eligible for surgery if their weight is more than 45 kg above their ideal weight. If a patient's Body Mass Index (BMI) is 35-39 and they also have other medical issues, they may be eligible for weight-loss surgery. BMI is a person's weight in kilograms divided by the square of their height in meters. Weight-loss surgery results in a high cure rate for some medical conditions such as diabetes and high blood pressure.



Do I need a letter from my GP to use these services?

YES

OUR BARIATRIC SURGEON

NAME	PHONE NUMBER
Mr Colm O'Boyle	021-494 1144

BREAST CARE CENTRE

Our specialist Breast Care Centre has been operating for more than 30 years and provides state-of-the-art facilities. Our Breast Care Centre multidisciplinary teams include:

- surgeons,
- radiologists (doctors who specialise in diagnosing diseases and injuries using techniques such as X-rays),
- pathologists (doctors who interpret and diagnose the changes caused by disease in tissues and body fluids),
- oncologists (doctors who specialise in treating cancer), and
- nurses.

This team works together to make sure we see and investigate patients promptly. They also make sure that when the patient is diagnosed, they receive the highest standard of individually planned treatment and care.

When you visit our Breast Care Centre, you may have:

- your medical history taken,
- your breasts examined,
- a mammogram (X-ray picture of the breast), or an ultrasound (test to capture live images from inside the body), or both, and
- a biopsy if necessary – a sample of your tissue is taken so we can check it for disease.



Do I need a letter from my GP to use these services?

YES

OUR BREAST SURGEONS

NAME	PHONE NUMBER
Ms Deirdre O'Hanlon	021-494 1910
Mr Martin O'Sullivan	021-494 1910
Mr Brian Whooley	021-434 7944



CARDIOLOGY

Cardiology is the study and treatment of disorders of the heart. Our Cardiology Department provides cardiac investigations, procedures and treatments for adult patients with heart disease. We cater for all cardiac complaints including, the provision of:

- pacemakers (small device that's placed in the chest to help control heart rhythms), and
- implantable defibrillators (device put inside the body to help correct most life-threatening irregular heartbeats).



Do I need a letter from my GP to use these services?

YES

OUR RAPID ACCESS CHEST PAIN CLINIC

Our Rapid Access Chest Pain Clinic investigates patients with chest pain. It provides a one-stop service where patients undergo assessment and investigations to confirm or exclude heart disease. Most patients are seen the same day as they are referred.

CARDIAC REHABILITATION PROGRAMME

We provide a comprehensive Cardiac Rehabilitation Programme where patients are referred via a consultant cardiologist. At the end of the programme, the patient will:

- have improved their fitness level,
- be leading a more active lifestyle,
- have developed more self-confidence, and
- have improved the knowledge of their condition.

GENERAL CARDIOLOGY DEPARTMENT

PHONE NUMBER 021-480 1633

OUR CARDIOLOGISTS

NAME PHONE NUMBER

Dr Heiko Kindler 021-434 3753

Dr Keith Morrice 021-434 3753

Dr Conor O'Shea 021-434 7973

Dr Patrick Owens 087-965 1134

Prof Carl Vaughan 021-493 5084

HERE ARE SOME OF THE CARDIOLOGY TESTS WE PROVIDE:

ECG (electrocardiogram)	Several electrodes are attached to your skin on each arm and leg and on your chest. These are hooked to a machine that traces your heart activity onto paper.
Stress test	This involves ECG monitoring while you walk on a treadmill.
Echocardiogram	An ultrasound of the heart (test to see images of the heart from inside the body).
24 hour-Holter monitoring	This is a device you wear during the day to record the rate and rhythm of your heart.
Tilt-table test	This test tries to find out the cause of unexplained fainting.
Blood pressure monitoring	You wear a blood pressure cuff on your arm that is attached to a small monitor box worn around your waist for 24 hours.
Cardiac CT Scan (heart computed tomography scan)	When you have a CT scan, we can get detailed images of the heart and arteries.
Cardiac MRI (magnetic resonance imaging)	Painless imaging test that uses radio waves, magnets, and a computer to create detailed pictures of your heart.
Calcium screening	X-ray to check for the build-up of calcium.

COLORECTAL

Our colorectal service treats a variety of conditions and carries out procedures to treat harmful, cancerous and non-harmful bowel disorders. The colorectal complaints we assess and treat include:

- ▶ colon cancer,
- ▶ rectal cancer,
- ▶ inflammatory bowel disease,
- ▶ diverticular disease (related to the large intestine),
- ▶ rectal prolapse (rectum has slipped out of place), and
- ▶ faecal incontinence (lack of control over stool / poo).



Do I need a letter from my GP to use these services?

YES

OUR GENERAL AND COLORECTAL SURGEON

NAME

PHONE NUMBER

Mr Brian Barry

021-454 4771

DAFFODIL CENTRE

The Daffodil Centre is an extension of the Irish Cancer Society's cancer support service. It aims to provide a wide range of information to anyone affected by or concerned about cancer. It helps people to cope with the impact cancer is having on their lives. The Daffodil Centre provides information, advice, help and support to:

- ▶ patients,
- ▶ relatives,
- ▶ healthcare professionals, and
- ▶ the public.

The centre is staffed by an experienced cancer nurse. It is a free service, with no appointment necessary and is located just off the main hospital entrance.



Do I need a letter from my GP to use these services?

NO

DAFFODIL CENTRE

PHONE NUMBER

021-494 1941

DENTISTRY INCLUDING ORAL AND MAXILLO-FACIAL SURGERY

Dentistry is a branch of medicine that studies, diagnoses, prevents and treats diseases, disorders and conditions of the mouth and related structures of the jaw and facial area.



Do I need a letter from my Dentist to use these services?

YES

OUR SERVICE ASSESSES AND TREATS A RANGE OF CONDITIONS.

We release tongue tie.

We deal with dental cysts.

We extract teeth:

- wisdom teeth,
- impacted teeth.

We also remove buried tooth roots.

OUR ORAL SURGEON

NAME	PHONE NUMBER
Professor Duncan Sleeman	021-490 1100

DERMATOLOGY

Dermatologists are experienced in identifying and managing a wide range of skin, hair and nail conditions that affect adults and children.



Do I need a letter from my GP to use these services?

YES

THESE ARE SOME OF THE DERMATOLOGY CONDITIONS WE TREAT AND SERVICES WE PROVIDE:

Melanoma and non-melanoma skin cancer treatments.

Mohs micrographic surgery (highly specialised surgery to remove skin cancer)

Phototherapy (using light therapy) for conditions like:

- psoriasis, and
- eczema

Vascular laser treatment for:

- rosacea (condition causing flushing, redness and red pimples on the face), and
- port-wine stains.

Patch testing for allergic contact dermatitis

Inflammatory diseases of the skin such as eczema and psoriasis

OUR DERMATOLOGISTS

NAME	PHONE NUMBER
Dr Gillian Gibson	021-494 1566
Dr William O'Connor	021-494 1566

DIABETES AND ENDOCRINOLOGY

Endocrinology is the study of the endocrine system. This system is made up of the body's glands – organs that make hormones – and the hormones they produce, how they function and their disorders.

We provide assessment and treatment for a range of complaints, like:

- diabetes,
- over-active and under-active thyroid,
- high cholesterol,
- polycystic ovarian syndrome (related to unbalanced hormones), and
- osteoporosis (a disease that thins and weakens bones).

OUR ENDOCRINOLOGISTS

NAME	PHONE NUMBER
Dr Maeve Durkan	021-420 9330
Dr Eoin P O'Sullivan	021-434 1955



Do I need a letter from my GP to use these services?

YES

DIAGNOSTIC IMAGING AND X-RAY

Diagnostic imaging are the techniques and processes used to create images of the human body.

THESE ARE SOME OF THE PROCEDURES AND TESTS OUR X-RAY DEPARTMENT PROVIDES:

General X-rays.

Ultrasound (a device that uses sound waves to develop images of the organs inside the body).

MRI (magnetic resonance imaging) – an MRI uses a large magnet and radio waves to look at organs and structures inside the body.

Mammography – an X-ray picture of the breast.

CT scan (computed tomography scan) – computerised tomography is a type of three-dimensional X-ray giving far more information than a normal X-ray.

Bone density scan – enhanced form of X-ray technology that is used to measure bone loss.



Do I need a letter from my GP to use these services?

YES

X-RAY/DIAGNOSTIC IMAGING DEPARTMENT

NAME	PHONE NUMBER
General Department	021-4801656

OUR RADIOLOGISTS

Dr Eamonn Carmody
Dr David Hill
Dr David Kidney
Dr Vincent McDermott
Dr Michael Murphy
Dr Paul O'Sullivan
Dr Pauline Smiddy

EAR, NOSE AND THROAT (ENT)

Otolaryngology is the field of medicine that deals with problems related to the ear, nose and throat. Our ENT service is available to both adults and children. We provide assessment and treatment for a range of complaints like:

- hearing loss,
- nasal deformity,
- tonsillitis,
- thyroid disorders,
- hoarseness,
- swallowing disorders,
- tinnitus (ringing in the ears),
- allergic rhinitis, for example, hayfever, and
- adenoid problems (tissue that obstructs breathing).



Do I need a letter from my GP to use these services?

YES

OUR ENT SURGEONS

NAME	PHONE NUMBER
Mr Michael Harney	021-486 5773
Mr Gerard O'Leary	021-431 9191
Mr Charles Shinkwin	021-434 8240



ENDOSCOPY

Endoscopy is a procedure, where a consultant doctor passes a camera with a bright light into an area of the body to obtain a clear view of the surrounding tissue. The consultant can then take a sample to test for abnormality if needed.



Do I need a letter from my GP to use these services?

YES

OUR ENDOSCOPY PROCEDURES INCLUDE THE FOLLOWING.

Gastroscopy	Procedure to see lining of: <ul style="list-style-type: none"> • the gullet (food pipe), • the stomach, and • part of the intestine.
Colonoscopy / sigmoidoscopy	Procedure to see lining of the: <ul style="list-style-type: none"> • large intestine, and • bowel.
Bronchoscopy	Procedure to look inside the lungs.
Cystoscopy	Procedure to look inside the: <ul style="list-style-type: none"> • bladder, and • urethra (tube that carries urine from the body).
Colposcopy	Procedure to look at the: <ul style="list-style-type: none"> • vulva, • vagina, and • cervix (neck of the womb).
Hysteroscopy	Procedure to examine inside the womb.

OUR ENDOSCOPY DEPARTMENT

General Department
021-4801691/2

OUR ENDOSCOPY CONSULTANTS

NAME	PHONE NUMBER	TITLE
Mr Brian Barry	021-454 4771	Colorectal Surgeon
Mr Liam Doherty	021-434 0334	Respiratory Physician
Mr David Gough	021-434 6276	Breast and General Surgeon
Dr Lucina Jackson	021-493 3533	Gastroenterologist
Dr Barbara Kerkhoff	021-434 7235	Gynaecologist
Mr Dermot Lanigan	021-434 2277	Urologist
Mr Colm O'Boyle	021-494 1144	Bariatric and General Surgeon
Mr Peter Ryan	021-434 3985	Urologist
Mr Charles Shinkwin	021-434 8240	ENT Surgeon
Dr William Stack	021-434 8433	Gastroenterologist
Mr Brian Whooley	021-434 7944	Breast and General Surgeon

GASTROENTEROLOGY

Gastroenterology is the branch of medicine which focuses on the digestive system and its disorders. This involves the study of the normal function and diseases of the:

- oesophagus (food pipe),
- stomach,
- small intestine,
- colon (the main part of the large intestine that absorbs water and electrolytes from undigested food),
- rectum,
- pancreas,
- gall bladder (organ that stores bile – a substance that helps digestion),
- liver, and
- bile ducts (tubes that carry a substance called 'bile' needed for digestion).

Doctors practising in this field are called gastroenterologists.



Do I need a letter from my GP to use these services?

YES

THESE ARE SOME OF THE GASTROENTEROLOGY COMPLAINTS THAT WE ASSESS AND TREAT:

Bleeding in the digestive tract.

Constipation and diarrhoea.

Heartburn and gastroesophageal reflux disease.

Cancers, for example:

- colorectal,
- stomach,
- pancreatic, and
- liver.

Diverticular disease and other diseases of the colon:

- polyps (small growths in the colon or rectum),
- IBS (irritable bowel syndrome),
- colitis (inflammation of the colon), and
- Crohn's disease (a form of bowel disease).

Liver disease, for example:

- hepatitis, and
- jaundice (yellow coloured skin or whites of eyes caused by obstruction of the bile duct, by liver disease, or by excessive breakdown of red blood cells).

Malabsorption disorders, for example:

- coeliac disease (where gluten in food damages the small intestine), and
- lactose intolerance (body is unable to digest a type of sugar mainly found in milk and dairy products).

THESE ARE SOME OF THE GASTROENTEROLOGY TESTS WE PROVIDE:

Colonoscopy	We examine the colon (bowel) with an endoscope.
Stool test	We do tests on a stool (poo) sample to help diagnose certain conditions affecting the digestive tract.
Barium swallow	The patient swallows liquid barium while we take X-ray images.
Endoscopy	This involves using an endoscope to examine inside the body.

OUR GASTROENTEROLOGISTS

NAME	PHONE NUMBER
Dr Lucina Jackson	021-493 3533
Dr William Stack	021-434 8433

GENERAL SURGERY

Our general surgeons operate on:

- the large and small intestines,
- stomach,
- oesophagus (food pipe),
- liver,
- gallbladder,
- bile ducts (tubes that carry 'bile' – a substance needed to help digestion),
- pancreas,
- thyroid gland,
- hernia's, and
- cysts (a cyst is a sac-like pocket of tissue that contains fluid, air or other substances)



Do I need a letter from my GP to use these services?

YES

THESE ARE SOME OF OUR OUT-PATIENT PROCEDURES:

- Skin lesions removal.
- In-grown toe nails.

OUR GENERAL SURGEONS

NAME	PHONE NUMBER
Mr Brian Barry	021-454 4771
Mr David Gough	021-434 6276
Mr Colm O'Boyle	021-494 1144
Mr Brian Whooley	021-434 7944

GYNAECOLOGY

A gynaecologist specialises in diseases of the female genital tract and women's health. This means diseases of the:

- uterus (womb),
- fallopian tubes (tubes along which eggs travel from the ovaries to the uterus),
- ovaries,
- cervix (opening of the womb), and
- vagina.



Do I need a letter from my GP to use these services?

YES

THESE ARE SOME OF THE GYNAECOLOGICAL AREAS WHERE WE PROVIDE ASSESSMENT AND TREATMENT:

urinary incontinence,

fibroids – non-cancerous growth in the womb,

menstrual dysfunction, and

endometriosis – when tissue that normally grows inside the uterus grows outside it.

OUR GENERAL SURGEONS

NAME	PHONE NUMBER
------	--------------

Dr Matt Hewitt	021-438 6036
-----------------------	--------------

Dr Barbara Kerkhoff	021-434 7235
----------------------------	--------------

Prof Barry O'Reilly	021-434 8931
----------------------------	--------------

Dr Suzanne O'Sullivan	021-434 8931
------------------------------	--------------

Dr John Waterstone	021-434 7065
---------------------------	--------------

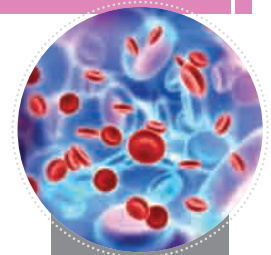
HAEMATOLOGY – STUDY OF THE BLOOD

Haematology is practised by specialists who deal with the diagnosis, treatment and management of people with blood disorders, ranging from anaemia to blood cancer.

OUR HAEMATOLOGIST

NAME	PHONE NUMBER
------	--------------

Dr Eileen Kelleher	021-454 5899
---------------------------	--------------



Do I need a letter from my GP to use these services?

YES

HEALTH SCREENING

Our Health Screening Unit is a dedicated service that offers a complete programme designed to help identify, reduce and remove health risks.

A consultation includes:

- a pre-arranged appointment lasting about three hours,
- a complete and comprehensive medical history and physical examination by a medical doctor – this includes a total skin evaluation, and
- blood tests.

A consultation may also include cardiac screening. A consultation includes a full range of preventative screening blood tests which may include:

- cholesterol,
- liver,
- kidney,
- diabetes,
- gout (a form of arthritis),
- anaemia – a condition where you don't have enough red blood cells,
- haemochromatosis – your body absorbs and stores too much iron,
- prostate cancer (men),
- calcium disorders,
- rubella (German measles) assessment for women, and
- thyroid assessment.



Do I need a letter from my GP to use these services?

NO

OUR HEALTH SCREENING DEPARTMENT

NAME	PHONE NUMBER
Dr Julie Coyle	021-480 1787

MEDICAL ASSESSMENT UNIT (MAU)

Your GP can refer you to our Medical Assessment Unit (MAU) for rapid access to our service provided by consultants; and for a wide range of medical and urology complaints. The MAU accepts patients over 16 years of age.

One of our consultants will see you without delay. We will organise any tests you need while you are in the MAU. If admission to our hospital is necessary, we will arrange this without delay. If you are sent home, we will arrange any follow-up tests or appointments for you. When you are being discharged from the MAU, the MAU consultant will complete a letter for your GP.

We will soon open a Paediatric Medical Assessment Unit (MAU) a service that will assess and treat children under 16 years of age and for a wide range of medical complaints. If admission to the hospital is necessary, we will arrange this without delay.



Do I need a letter from my GP to use these services?

YES

OUR MEDICAL ASSESSMENT UNIT

NAME	PHONE NUMBER
------	--------------

Professor Ronan O'Sullivan 021-480 1604

Second Consultant in Emergency Medicine commencing later in 2017.

OPENING HOURS

8am-6pm Mon-Friday (except Public Holidays)

NEUROLOGY AND NEUROPHYSIOLOGY

Neurology is the study and treatment of disorders of the brain and the nervous system. The service provides assessment and treatment for a range of complaints like:

- general neurology,
- epilepsy (condition causing seizures),
- multiple sclerosis,
- Parkinson's disease,
- movement disorders like Parkinson's Disease,
- migraine and headaches,
- motor-neuron disease (affects the nervous system), and
- headache, including the provision of greater occipital nerve block injections

Neurophysiology looks at the function of the central (brain and spinal cord) and peripheral nervous system (nerves and ganglia outside the brain and spinal cord).



Do I need a letter from my GP to use these services?

YES

OUR NEUROPHYSIOLOGY DEPARTMENT

PHONE NUMBER 021-4801715

OUR NEUROLOGISTS

NAME PHONE NUMBER

Dr Peter Kinirons 021-486 5730

Dr Kinirons sees patients from 14 years of age onwards.

Dr Seán S. O'Sullivan 086-4480522

SOME OF THE FOLLOWING TESTS ARE AVAILABLE IN OUR HOSPITAL. THEY CAN BE HELPFUL TO MAKE A DIAGNOSIS OR RULE OUT CERTAIN CONDITIONS.

Nerve conduction studies	These are done to diagnose carpal tunnel syndrome (tingling or numbness in hand and fingers) and neuropathies (nerve disorders).
Electromyography (EMG)	This is a technique to evaluate muscle disorders.
Routine EEG (electroencephalogram)	This looks at brain activity to diagnose epilepsy.
Prolonged video EEG	A video records information during the EEG.

NUTRITION AND DIETETICS

A dietitian is a health professional who is qualified to give accurate advice and information on all aspects of nutrition and diet for adults and children.

OUR NUTRITION AND DIETETIC SERVICE OFFERS ACCESS FOR ALL NUTRITIONAL CONCERNS INCLUDING:

- weight management,
- diabetes,
- raised cholesterol, and
- digestive complaints.



Do I need a letter from my GP to use these services?

NO

OUR NUTRITION AND DIETETICS DEPARTMENT

PHONE NUMBER

021-494 1930

OCCUPATIONAL THERAPY

Occupational therapy (OT) assesses and treats people with physical, mental or cognitive disorders so they can develop, recover or maintain their daily living and work skills.

Occupational therapists look at the physical effects of ageing, injury or disease. They try to help you to regain and or maintain your independence in your daily life.

Some of the OT services we provide include:

- hand therapy and splinting,
- treatment for arthritis,
- specialised treatment in osteoarthritis of the thumb,
- assessing people's functional capacity, and
- relaxation and stress management.



Do I need a letter from my GP to use these services?

NO

OUR OCCUPATIONAL THERAPY DEPARTMENT

PHONE NUMBER

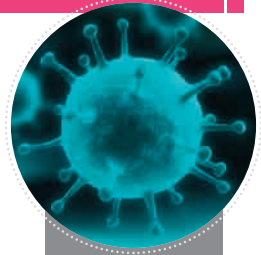
021-480 1630

ONCOLOGY

Oncology is the study of cancer and is the branch of medicine that researches, identifies, and treats malignant tumours and disorders of the blood. A doctor who works in this area is called an oncologist.

We provide a full range of oncology services including the following:

- chemotherapy (treatment that uses drugs to fight cancer),
- immunotherapy (also called biologic therapy, is a type of cancer treatment designed to boost the body's natural immune system to fight cancer),
- hormone therapy,
- clinical trials (testing of new drugs), and
- palliative care (focuses on providing relief from symptoms for people with serious illnesses).



Do I need a letter from my GP to use these services?

YES

OUR ONCOLOGISTS

NAME	PHONE NUMBER
Dr Brian Bird	021-434 3703
Dr Conleth Murphy	021-434 5495

OPHTHALMOLOGY

Ophthalmologists specialise in vision care and the diagnosis and treatment of diseases of the eye. Our service is available to adults and children.

WE PROVIDE ASSESSMENT AND TREATMENT FOR A RANGE OF CONDITIONS, INCLUDING THE FOLLOWING:

Cornea and ocular surface disease – disorders of the surface of the cornea (the transparent layer that forms the front of the eye).

Glaucoma – pressure within the eyeball causing gradual loss of sight.

Age-related macular degeneration – deterioration of part of the retina.

Diabetic retinopathy – diabetes complication that affects the eyes.

Squint surgery.

Cataract surgery.



Do I need a letter from my GP or Optician to use these services?

YES

OUR OPHTHALMOLOGISTS

NAME	PHONE NUMBER
Professor PE Cleary	021-427 3444
Mr Anthony Cullinane	021-494 1358
Mr Behrooz Golchin	021-434 1030
Mr Gerard O'Connor	021-434 4096

ORTHOPAEDICS

Orthopaedic specialists diagnose and treat disorders, conditions, and injuries of the skeletal system and the muscles, joints, and ligaments (tissues that connect bones) associated with it.

OUR ORTHOPAEDIC SERVICES INCLUDE:

Hip and knee replacement.

Hip and knee revision.

Foot and ankle surgery.

Upper-limb surgery.

Joint injections.

Sports hip and sports knee injuries.



Do I need a letter from my GP to use these services?

YES

OUR ORTHOPAEDIC SURGEONS

NAME	PHONE NUMBER
------	--------------

Mr Kieran Barry	021-434 4343
-----------------	--------------

Mr Declan Bowler	021-206 7744
------------------	--------------

Mr Stephen Brennan	021-434 0307
--------------------	--------------

Mr Pat Fleming	021-494 1345
----------------	--------------

Mr Dave Mulcahy	021-494 1315
-----------------	--------------

PAEDIATRIC DENTISTRY

Our paediatric dentistry service offers a wide range of treatments to children from age one to 16 years old.

OUR PAEDIATRIC DENTISTRY SERVICES INCLUDE:

- extracting teeth,
- placing fissure seals (seal to protect children's back teeth),
- replanting and repositioning of traumatised teeth, and
- filling primary, or permanent teeth, or both.

OUR PAEDIATRIC DENTISTS

NAME	PHONE NUMBER
------	--------------

Dr Siobhan Lucey	021-461 4520
------------------	--------------

Dr Jennifer McCafferty	021-461 4520
------------------------	--------------

Dr Eimear Norton	052-612 1012
------------------	--------------



Do I need a letter from my Dentist to use these services?

YES

PAEDIATRIC MEDICINE

Paediatrics is the branch of medicine dealing with the health and medical care of infants, children, and adolescents. Our paediatric service treats children from 28 days to 16 years' old.

OUR PAEDIATRIC SERVICE TREATS AND ASSESSES A RANGE OF COMPLAINTS LIKE:

- asthma,
- food allergies – including testing,
- epilepsy,
- constipation, and
- bed wetting (enuresis).

PAEDIATRIC NEUROLOGICAL CONDITIONS:

We diagnose conditions of the:

- brain,
- spinal cord,
- nerves, and
- muscles.

WE ALSO HAVE A PAEDIATRIC CONCUSSION CLINIC.

We will soon open a Paediatric Medical Assessment Unit (MAU) a service that will assess and treat children and if admission to the hospital is necessary, we will arrange this without delay.



Do I need a letter from my GP to use these services?

YES

OUR PAEDIATRICIANS

NAME	PHONE NUMBER
------	--------------

Dr Sami Ahmed	021-434 7788
---------------	--------------

Dr Niamh Lynch	021-454 6343
----------------	--------------

Third Paediatrician commencing later in 2017.

PAIN MEDICINE

Our pain medicine service provides for the assessment and management of sudden, severe and long-lasting pain.

OUR PAIN SERVICES INCLUDE THE FOLLOWING:

Facet joint block	A needle is inserted into the joint and delivers a steroid medication which anaesthetises (numbs) the joints and blocks the pain.
Nerve root blockade for sciatica	An injection is given to relieve low back pain.
Joint injection	An injection into the joint to relieve pain.
Epidural	An injection given to relieve pain.
Intravenous infusions for management of chronic pain	Intravenous infusions (where medication is injected into the vein) can help manage long-term pain.



Do I need a letter from my GP to use these services?

NO

OUR PAIN SPECIALISTS

NAME	PHONE NUMBER
------	--------------

Dr Christine Cleary	021-434 5633
---------------------	--------------

Dr Donal Harney	021-493 5137
-----------------	--------------

PATHOLOGY

Pathology is the analysis of; bodily fluids such as blood and urine, biopsies (testing of sample cells or tissue for disease), and surgically removed tissue.

OUR PATHOLOGY CONSULTANTS AND SCIENTISTS PROVIDE A RANGE OF SERVICES INCLUDING THE FOLLOWING:

We determine liver, kidney and blood functions in patients.

We identify and stage cancer.

We recommend appropriate antibiotics based on laboratory investigation of infections.

If your doctor asks you to have a blood test done, our pathology department also offers a phlebotomy (blood taking) service.



Do I need a letter from my GP to use these services?

YES

OUR LABORATORY MEDICINE SERVICE DEPARTMENT

PHONE NUMBER

021-480 1720

PHYSIOTHERAPY

Physiotherapy helps restore movement and function.

A physiotherapist provides treatment for people suffering from physical problems arising from injury, disease, illness and ageing. They aim to improve a person's quality of life by using a variety of treatments to alleviate pain and restore function.

THESE ARE SOME OF THE ASSESSMENTS AND TREATMENTS WE PROVIDE:

Acupuncture – for back and neck pain and chronic pain.

Concussion rehabilitation (brain injury recovery).

Incontinence – male and female.

Mobility physiotherapy.

Neuro-rehabilitation.

Chest physiotherapy and pulmonary rehabilitation (example: exercise programme to regain strength and independence).

Vestibular rehabilitation – for inner-ear balance disorders.

Orthopaedic rehabilitation – for muscle, bones, ligaments and tendons.

Oncology rehabilitation programme.

Phototherapy – we use ultra violet light to treat conditions like psoriasis.

Orthotics – we supply custom made orthotics for your shoes.



Do I need a letter from my GP to use these services?

Please contact the Department and they will advise if a GP letter is required.

PHYSIOTHERAPY DEPARTMENT

PHONE NUMBER

021-480 1630

PLASTIC SURGERY

Plastic surgery is the process of reconstructing, removing or repairing parts of the body by transferring tissue.

These are some of the plastic surgery services we provide:

- skin grafts,
- removal of benign (non-cancerous) or malignant (cancerous) lesions (organs or tissues),
- correcting protruding ears,
- tarsal tunnel release (releasing trapped nerves usually near the ankle),
- ganglion removal (removal of benign cysts), and
- carpal tunnel (surgery on hand to release tingling and numbness).



Do I need a letter from my GP to use these services?

YES

OUR PLASTIC SURGEONS

NAME	PHONE NUMBER
Dr Anna McKenna	021-454 2807
Mr Michael O'Shaughnessy	021-494 1337



RESPIRATORY AND SLEEP MEDICINE

Respiratory medicine specialises in diseases of the respiratory system including:

- the upper airway (throat and neck area),
- the lungs,
- the chest wall,
- the pulmonary circulation (the passage of blood from the right side of the heart through arteries to the lungs where it picks up oxygen and is returned to the left side of the heart by veins), and
- the movement of air in and out of the lungs.

Sleep medicine specialises in the diagnosis and therapy of sleep disturbance and disorders.



Do I need a letter from my GP to use these services?

YES

WE PROVIDE ASSESSMENT AND TREATMENT FOR A RANGE OF CONDITIONS INCLUDING THE FOLLOWING:

Obstructive airways disease – asthma and chronic obstructive airways disease.

Interstitial lung diseases like dry cough and shortness of breath.

TB and other infectious lung diseases such as bronchitis and flu.

Obstructive sleep apnoea (OSA) – snoring and other sleep-related conditions.

THESE ARE SOME OF THE RESPIRATORY AND SLEEP MEDICINE SERVICES WE PROVIDE:

Full sleep study – for conditions like excessive daytime sleepiness, restless legs and insomnia.

Pulmonary function test (this test can help diagnose certain types of lung disease such as asthma and bronchitis).

Bronchial challenge test (determines if a patient has hypersensitive airways for example asthma).

Overnight oximetry – test used to measure oxygen level in blood.

Patient education such as how to use an inhaler.

Smoking cessation such as nicotine replacement therapy, patches/gum and support group.

CPAP – overnight trial of treatment for obstructive sleep apnoea to determine tolerance and suitability.

OUR RESPIRATORY AND SLEEP LAB DEPARTMENT

NAME	PHONE NUMBER
------	--------------

General Department	021-480 1715
---------------------------	--------------

OUR RESPIRATORY PHYSICIANS

Dr Liam Doherty	021-434 0334
------------------------	--------------

Dr Oisín O'Connell	021-4542807
---------------------------	-------------

RHEUMATOLOGY

Rheumatology is a branch of medicine that deals with the investigation, diagnosis and management of patients with arthritis and other musculoskeletal conditions.

WE ASSESS AND TREAT THE FULL RANGE OF CONDITIONS INCLUDING:

Acute inflammatory disease.

Gout (inflammatory arthritis).

Osteoporosis – bones that are brittle and fragile.

Osteoarthritis – joint disease affecting cartilage in a joint.

Ankylosing spondylitis – arthritis of:

- neck,
- lower back, and
- buttocks.

Polymyalgia rheumatica – condition that causes pain, stiffness and inflammation.

Giant cell arteritis – inflammation of lining of arteries.

Lupus and other connective tissue disease. Lupus is a chronic inflammatory disease that occurs when your body's immune system attacks your own tissues and organs.



Do I need a letter from my GP to use these services?

YES

OUR RHEUMATOLOGISTS

NAME	PHONE NUMBER
Dr John McCarthy	021-434 4603
Dr Catherine Molloy	021-494 1355

We also provide Infusions and other therapies.



UROLOGY

Urology is a surgical specialty that deals with the treatment of conditions involving the male and female urinary tract and the male reproductive organs.

We have an incontinence advice clinic and we assess and treat a range of urological complaints. We provide:

- incontinence surgery,
- urodynamic evaluation – how the bladder and urethra are performing,
- renal stone surgery,
- an erectile dysfunction clinic,
- laser surgery for prostate and bladder,
- testosterone replacement therapy, and
- prostatectomy – removal of all or part of prostate gland.



Do I need a letter from my GP to use these services?

YES

OUR UROLOGISTS

NAME	PHONE NUMBER
Mr Dermot Lanigan	021-434 2277
Mr Peter Ryan	021-434 3985

RAPID ACCESS

The Rapid Access Prostate service provides prompt diagnosis and treatment of prostate gland disorders including prostate cancer.

VASCULAR SERVICE

Vascular surgery is a specialty in which diseases of the vascular system, arteries and veins, are managed.

We assess and treat a range of conditions including:

- varicose veins,
- carotid artery disease (serious narrowing of arteries), and
- leg ulcers.



Do I need a letter from my GP to use these services?

YES

VASCULAR SURGEON

NAME	PHONE NUMBER
Mr Greg Fulton	021-494 1341

MEDICAL ASSESSMENT UNIT

Patient Information



BON SECOURS HOSPITAL
College Road, Cork

Our **Medical Assessment Unit (MAU)** is a modern, ten-bed purpose built facility. Your GP can refer you to our MAU for rapid access to a consultant provided service and for a wide range of complaints. We accept patients over 16 years of age.

You will be seen without delay and any tests required will be organised for you while you are in the MAU.

If admission to the hospital is necessary this will be arranged without delay. If you are sent home, arrangements for any follow up tests or appointments will be made for you. The MAU Consultant will complete a letter for your GP which you should collect at reception before leaving the unit.

COST:

- The initial consultation fee for patients attending the MAU is €125; the average fee is €255 (including various tests) and the maximum amount payable is €495
- However, if you are admitted following MAU treatment all but the initial fee of €50 will be waived
- Your admission to hospital following MAU treatment may be covered by your medical insurance, depending on your plan
- If you are discharged home from our MAU you will be required to pay your bill before leaving



Our **Medical Assessment Unit** is open
8am – 6pm, Monday to Friday

(except Public Holidays)

Tel. 021-4801604/05. Fax 021-4941985.

www.bonsecours.ie

Bon Secours Hospital – *Advanced Medicine Exceptional Care*



BON SECOURS HOSPITAL
College Road, Cork

www.bonsecours.ie

PAEDIATRIC CONCUSSION CLINIC

GP REFERRAL ESSENTIAL

TO ARRANGE AN APPOINTMENT:

Tel. 021-4546343.

Fax 021-4346951.

CONSULTANT
DELIVERED
SERVICE

PROMPT
ACCESS

Age range catered for 10-15 years

Initial consultation fee: €200 • Physiotherapy if required €50 • MRI if required: €295

Bon Secours Hospital – *Advanced Medicine Exceptional Care*

BON SECOURS HOSPITAL CORK

CONSULTANT MEDICAL STAFF

SPECIALITY	TITLE	CONTACT NAME	TEL (021)	FAX (021)
ANAESTHETICS	Dr	Gordian M Barry	4542807	4542133
	Dr	Richard D Flynn	4542807	4542133
	Dr	Kamran Ghori	4542807	4542133
	Dr	Denise McCarthy	4542807	4542133
	Dr	Nollag O'Rourke	4542807	4542133
	Dr	John Owens	4542807	4542133
BARIATRIC SURGERY	Mr	Colm O'Boyle	4941144	4941145
BREAST SURGERY	Mr	David Gough	4346276	4346168
	Ms	Deirdre O'Hanlon	4941910	4941911
	Mr	Martin O'Sullivan	4941910	4941911
	Mr	Brian Whooley	4347944	4347918
CARDIOLOGY	Dr	Heiko Kindler	4343753	4343284
	Dr	Keith Morrice	4343753	4343284
	Dr	Conor O'Shea	4347973	4544442
	Dr	Patrick Owens	087 9651134	051 853042
	Prof	Carl Vaughan	4935084	4271067
COLORECTAL SURGERY	Mr	Brian Barry	4544771	4544772
DERMATOLOGY	Dr	Gillian Gibson	4941566	4865778
	Dr	William O'Connor	4941566	4865778
ENDOCRINOLOGY	Dr	Maeve Durkan	4209330	4209331
	Dr	Eoin P. O'Sullivan	4341955	4346148
ENT SURGERY	Mr	Michael Harney	4865773	4865773
	Mr	Gerard O'Leary	4319191	4319516
	Mr	Charles Shinkwin	4348240	4865776
GASTROENTEROLOGY	Dr	Lucina Jackson	4933533	4933534
	Dr	William Stack	4348433	4347682
GENERAL SURGERY	Mr	Brian Barry	4544771	4544772
	Mr	David Gough	4346276	4346168
	Mr	Colm O'Boyle	4941144	4941145
	Mr	Brian Whooley	4347944	4347918
GYNAECOLOGY	Dr	Matt Hewitt	4386036	4545290
	Dr	Barbara Kerkhoff	4347235	4933534
	Prof	Barry O'Reilly	4348931	4344535
	Dr	Suzanne O'Sullivan	4348931	4344535
	Dr	John Waterstone	4347065	4865763
HAEMATOLOGY	Dr	Eileen C Kelleher	4545899	4347338
MEDICAL ASSESSMENT	Prof	Ronan O'Sullivan	4801604	4941985
NEUROLOGY	Dr	Peter Kinirons	4865730	4865731
	Dr	Seán S. O'Sullivan	086 80522	6010070
ONCOLOGY	Dr	Brian Bird	4343703	4867843
	Dr	Conleth Murphy	4345495	4345499

MEDICAL ASSESSMENT UNIT

**8am-6pm,
Mon to Fri**

(except Public Holidays)
Tel. 021-4801604/05
Fax 021-4941985

GP Referral Required

Initial consultation
fee: €125

Average fee: €255

Maximum amount
payable: €495

PAEDIATRIC CONCUSSION CLINIC

TO ARRANGE AN
APPOINTMENT:
Tel. 021-4546343.
Fax 021-4346951.

**Age range catered
for 10-15 years**

Initial consultation
fee: €200
Physiotherapy if
required €50
MRI if required: €295

GP REFERRAL
ESSENTIAL

CONSULTANT
DELIVERED SERVICE

PROMPT ACCESS

BON SECOURS HOSPITAL CORK

CONSULTANT MEDICAL STAFF

SPECIALITY	TITLE	CONTACT NAME	TEL (021)	FAX (021)
OPHTHALMOLOGY	Prof	PE Cleary	4273444	4278234
	Mr	Anthony Cullinane	4941358	4941360
	Mr	Behrooz Golchin	4341030	4341033
	Mr	Gerard O'Connor	4344096	4545770
ORAL & MAXILLA-FACIAL SURGERY	Prof	Duncan Sleeman	4901100	4901179
ORTHOPAEDIC SURGERY	Mr	Kieran Barry	4344343	4344341
	Mr	Stephen Brennan	4340307	4340313
	Mr	Declan Bowler	2067744	2067745
	Mr	Pat Fleming	4941345	4941348
	Mr	David Mulcahy	4941315	4941316
PAEDIATRICS	Dr	Sami Ahmed	4347788	4347789
	Dr	Niamh Lynch	4546343	4346951
PAEDIATRIC DENTISTRY	Dr	Jennifer McCafferty	4614520	4614918
	Dr	Eimear Norton	[052] 6121012	
	Dr	Siobhán Lucey	4614520	4614918
PAIN MEDICINE	Dr	Christine Cleary	4345633	4345634
	Dr	Donal Harney	4935137	4278428
PATHOLOGY	Dr	Marianne Fraher	4801717	4341983
	Dr	Triona Hayes	4801717	4341983
	Dr	Eileen Kelleher	4801717	4341983
	Dr	Olive Murphy	4801717	4341983
	Dr	Eoin O'Murchu	4801717	4341983
	Dr	Paul Ryan	4801717	4341983
PLASTIC SURGERY	Dr	Anna McKenna	4542807	
	Mr	Michael O'Shaughnessy	4941337	4941340
PSYCHIATRY	Dr	Fidelma Corcoran	4899884	4898021
	Dr	Marie Crowley	4899884	4898021
RADIOLOGY	Dr	Eamonn Carmody	4801656	4801799
	Dr	David Hill	4941910	4941911
	Dr	David Kidney	4801656	4801799
	Dr	Vincent McDermott	4801656	4801799
	Dr	Michael Murphy	4801656	4801799
	Dr	Paul O'Sullivan	4801656	4801799
	Dr	Pauline Smiddy	4941910	4941911
RESPIRATORY MEDICINE	Dr	Liam Doherty	4340334	4340336
	Dr	Oisín O'Connell	4542807	4343043
RHEUMATOLOGY	Dr	John McCarthy	4344603	4347338
	Dr	Catherine Molloy	4941355	4941357
UROLOGY	Mr	Dermot Lanigan	4342277	4342460
	Mr	Peter Ryan	4343985	4344907
VASCULAR SURGERY	Mr	Greg Fulton	4941341	4941344

Are you concerned about what your Health Insurance covers you for at the Bon Secours Hospital Cork?

Our experienced staff are dedicated to assisting you and are available to discuss your personal circumstances and give you specific advice relevant to your health insurance cover.

We are available to discuss funding options like:
No Health Insurance, Under Insured or still serving waiting periods.

1890 1300 27

Lines open
Monday-Friday 8am-6pm

BED MANAGEMENT / BOOKINGS OFFICE:

Monday to Friday:
8.30am-8.00pm

Saturday and Sunday:
9.00am-6.00pm

Tel: 021 4801604/5

Fax: 021 4941985

Tel: 021 4542807 (Out of Hours)


Medical Call
 AMBULANCE SERVICE

To arrange an ambulance to the Bon Secours Hospital, Cork:

Call 1890 666 999

This service is available from:

Monday to Friday

07:30 to 22:00

Saturday & Sunday

09:00 – 19:00



BON SECOURS HOSPITAL
College Road, Cork

Department of Radiology Bon Secours Hospital Cork



- **No Waiting Lists**
- **Service for Plain X-Rays**
 - (Mon-Fri, 9am-12pm & 2pm-4pm)
- **Same day reporting**
- **5 fulltime on site Radiologists**
- **State of the art equipment**
- **Enhanced GP Service including:**
 - Critical Alert System for urgent findings
 - Conduit to hospital referral and admission pathways
- **GP Letter Required**



BON SECOURS HOSPITAL
College Road, Cork

Department of Radiology

OUT-PATIENT PRICE LIST

Appointments: Tel. 021-4801656 / Fax. 021- 4801799

Pricing		
X-ray:	Chest	€85
	One area	€85
	Two areas	€120
	Three areas	€160
CT:		From €240
	Calcium Score	€200
	Coronary Angiography	€449
MRI		From €295
Ultrasound:	Small Parts	€150
	Pelvis	€150
	Abdomen	€190
	Abdo/Pelvis combined	€200
Mammography with Tomosynthesis		€140
Breast Ultrasound		€150
DEXA (Bone Mineral Density)		€85



ARE YOU CONCERNED ABOUT WHAT YOUR HEALTH INSURANCE COVERS YOU FOR AT THE BON SECOURS HOSPITAL, CORK?

All facilities at Bon Secours Hospital, Cork are available to patients with health insurance, on a self paying basis, or a combination of both.

Helpline Number:
1890 1300 27
Monday - Friday:
8am-6pm

Our experienced staff are dedicated to assisting you and are available to discuss your personal circumstances and give you specific advice relevant to your health insurance cover in the Bon Secours Hospital, Cork. Questions like:

- What does my health insurance cover at Bon Secours Hospital, Cork?
- What procedures and treatments am I covered for?
- Are there any costs and how can I pay?

We are also available to discuss funding options, for example if you have *No Health Insurance*, if you are *Under Insured* or if you are *still serving waiting periods*.

Make an enquiry to our Telephone Helpline Monday to Friday 9am to 6pm

1890 1300 27